

CITYWALL CLIMBING WALLS

CLIMBING SYSTEMS AND TECHNOLOGIES FOR THE FUTURE

Citywall, as a brand, has been present in the climbing industry for 25 years. We live and breathe climbing walls. We execute every project with total devotion and focus, no detail is neglected.

Our company's headquarters is located in Slovenia, a country with strong climbing tradition and excellent competition climbers. Our team consists of experts from different fields, from engineers, economists, designers, and many of them are great and experienced climbers. That's why we can competently advise to our customers, we understand the industry, we are setting the trends.

We are one of the few companies that have established their own production of both plywood and fiberglass (GRP) climbing walls.

Our production capacity is growing fast, per year we are able to produce up to 50.000 sqm of plywood climbing walls either by using wood or steel subconstruction elements.

With our fiberglass production capacity we can reach up to 2.000 sqm annually.

We all know how stressful the management of the process of building the climbing venue can be, from finding the right location, getting permits, coordinating different companies that execute all the internal and external works. We can save you at least some of these concerns.

In terms of design, we strive towards creativity that enables us to combine optimal space, management, functionality and diversity. We cooperate with our clients to achieve the envisioned goal with minimal resources. Efficient and fast installation with our team of technicians can bring your dreams come true and help your venue to start operating.

We are also the fastest company in terms of project fulfilment, and this is what sets us apart from the competition.

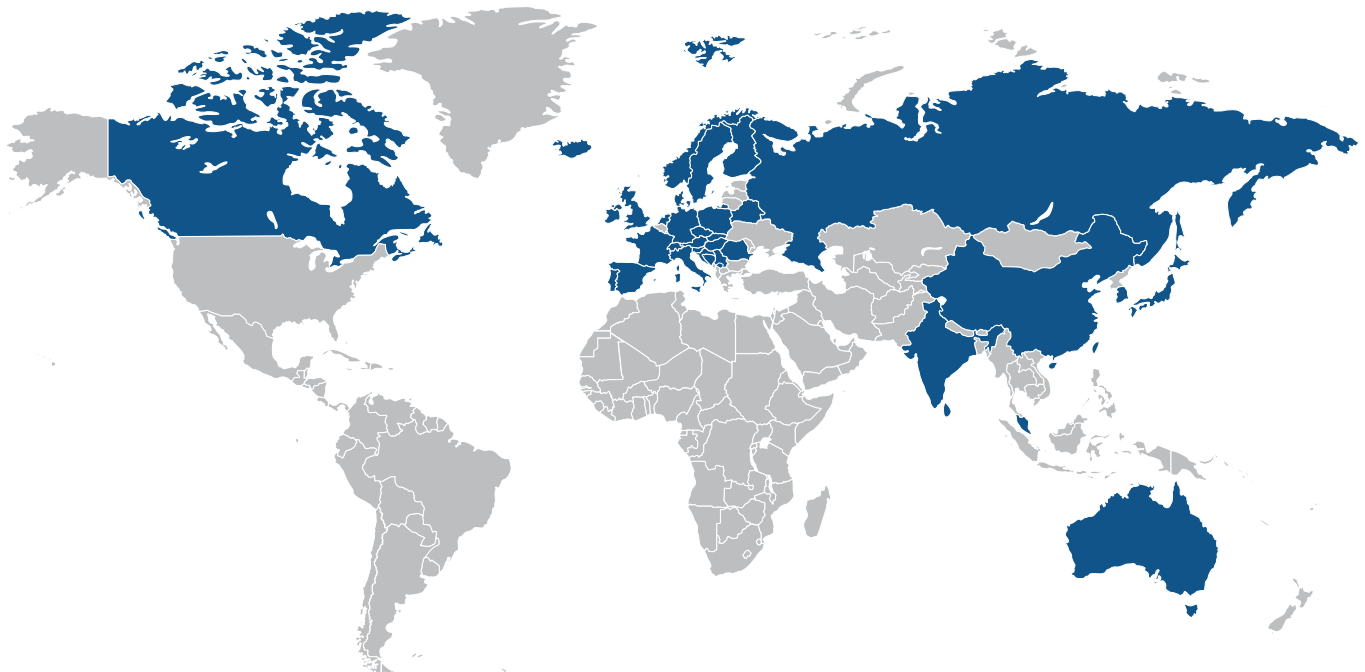
Did you know that we have finished 2000 m² of climbing wall installation in 6 weeks? And 600 m² in only 11 days?

WE ARE A GLOBAL COMPANY

CITYWALL is a synonym for quality, innovation, safety and enjoyment as a result of years of tradition and experience.

CITYWALL projects and products are being carried out in European countries, in Austria, Germany, the Netherlands, Denmark, Italy, Switzerland, Spain, Portugal, Slovenia, Hungary, Croatia, Serbia, Sweden, Norway, Finland, France, Romania and Kosovo.

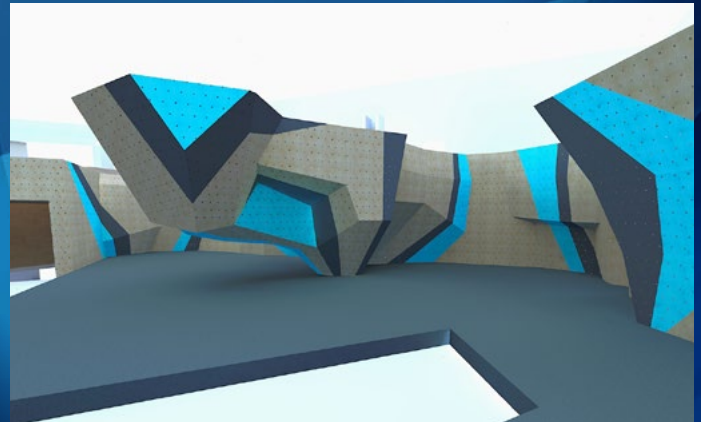
We are expanding our activities to Russia, Singapore, Hong Kong, South Korea, Sri Lanka, India, Japan, Canada and last but not least, to Australia.



ORDERING PROCESS

1. CONCEPT DEVELOPMENT

Based on your idea, we determine the goals of the project, identify the risks and opportunities in the development of the climbing facility. Based on more than 25 years of experience, we develop a concept that will maximize your investment. We think carefully about the creativity, aesthetics and functionality of the design, we focus on rational use of materials and technologies and on optimal use of the premises.



2. ANALYSIS AND PLANNING

We analyse every aspect of your project. We make sure that the developed concept is safe and in compliance with the European safety standards EN 12572. Once the analysis is complete, we plan the execution in every detail and determine the exact timeline of the execution. We provide you with 3D models of the climbing wall, we also engineer the optimal use of space with the construction of stairs, galleries, embedded elements and other solutions.





3. PRODUCTION AND TRANSPORT

Once we analyse and plan the project, we produce the individual components, specially for your climbing wall. Because we use our experience as the installer of the components, the production phase is completed with efficiency and precision. We also take care of the transport and customs clearance.



4. INSTALLATION AND TESTING

The last phase is the installation. During the construction we pay attention to every detail in the design, we stick to the pre-agreed timeframe while adhering the safety standards. We also provide all the necessary documentation and certificates. Our products are always compliant with the EN standards.

CLIMBING GYMS



Dortmund, Germany 2019



Munich, Germany 2020



Dortmund, Germany 2019



Dortmund, Germany 2019



Barcelona, Spain 2020



Passau, Germany 2019



Tromsø, Norway 2018



Dortmund, Germany 2019



Passau, Germany 2019



Dortmund, Germany 2019



Passau, Germany 2019



Zagreb, Croatia 2020



Singapore 2020



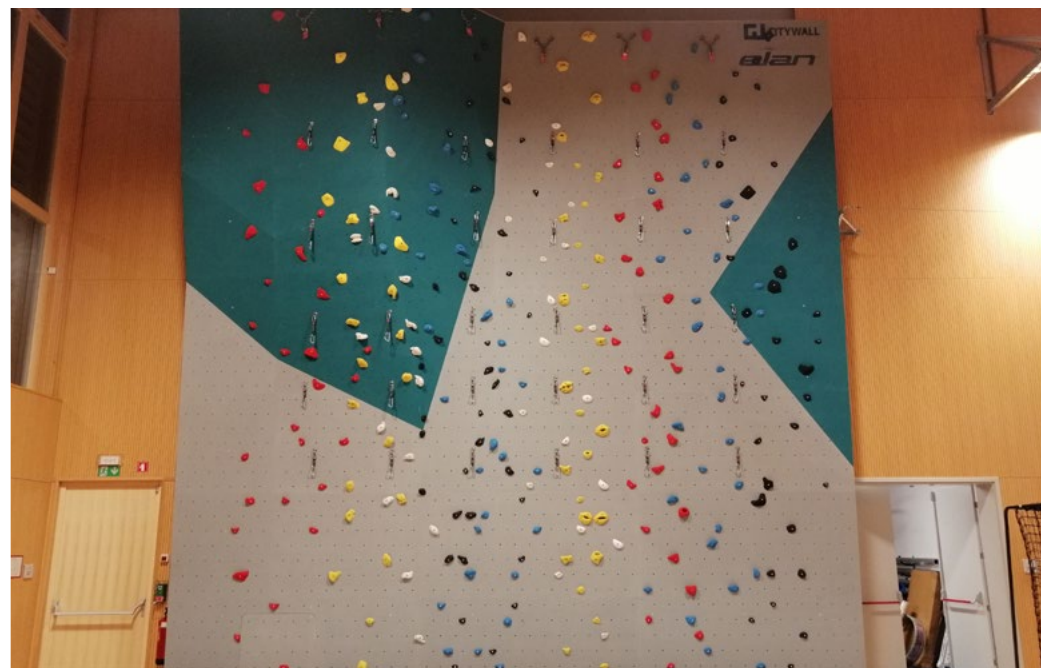
Milano, Italy 2020

 ENERVIT

 BCC
CREDITO COOPERATIVO

NEW

CLIMBING WALLS FOR DIFFERENT PURPOSES



SELFSTANDING AND MOBILE TOWERS AND BOULDERS





CLIMBING WALLS FOR CHILDREN





Zagreb, Croatia 2020



Munich, Germany 2019



PLAYGROUND EQUIPMENT





LABYRINTH





Ljubljana, Slovenia 2018



Graz, Austria 2019

OTHER PRODUCTS AND SERVICES



HOLDS AND VOLUMES

www.climbinggymheaven.com



Climbing Gym Heaven is a platform dedicated to all climbers, gym owners, gym managers, route setters and investors. We provide a wide range of products and services by building climbing walls for your climbing gyms, providing flooring solutions, carpenter products and specific training elements.

At Climbing Gym Heaven you will find a large variety of some of the best brands of climbing holds, macros, volumes, training equipment, and other climbing accessories.

We will provide you with everything you will ever need for making your projects a dream come true by equipping your gym with high-quality equipment or by simply refreshing your climbing walls.



SAFETY DOES NOT HAPPEN BY ACCIDENT

Safety is our number one priority. We use only premium materials from verified suppliers that help us to create safe and durable product. All our products are compliant with all relevant safety standards for climbing walls and we ensure that safety standards are taken into account during the process of installation and implementation.

MATERIAL DIVERSITY

When choosing technologies and construction techniques, we work with our clients to find the optimal solution.

We produce classic plywood climbing walls, but we are also specialized in fiberglass (GRP) climbing surfaces. These climbing walls are extra abrasion resistant and are perfect for military exercise, external walls, swimming pool walls or other walls in extreme environments.

The subconstruction elements material that we use can be plywood, hot dip galvanized or painted steel, or combination of both, but also aluminium for the most delicate projects, such as climbing walls near pools or on cruise ships.

DO YOU WANT TO BE
OUR SALES REPRESENTATIVE?

JOIN OUR CITYWALL TEAM!



We are a fast expanding, creative and technologically advanced business partner, that dedicates fully to every project and offer 24/7 availability to our customers with immediate response.



CST Climbing Systems and Technology Ltd. | Koštialova 32 | 8000 Novo mesto | Slovenia (EU)
Phone: 00 386 41 953 855 | e-mail: info@citywall.eu | web: www.citywall.eu



e-mail: info@climbinggymheaven.com | web: www.climbinggymheaven.com

